



University of Banja Luka
Faculty of Mechanical Engineering
Faculty of Electrical Engineering



DEMI 2015

**12. International Conference on Accomplishments in
Electrical and Mechanical Engineering
and Information Technology**

PROCEEDINGS

Banja Luka, 29th - 30th May 2015

CIP - Каталогизacija u publikaciji
Nародна и универзитетска библиотека
Републике Српске, Бања Лука

621.3(082)(0.034.2)
621(082)(0.034.2)
004(082)(0.034.2)

INTERNATIONAL conference on accomplishments in Electrical and
Mechanical Engineering and Information Technology (12 ; Banja Luka)
(2015)

Proceedings [Elektronski izvor] = Zbornik radova / 12th
International conference on accomplishments in Electrical and
Mechanical Engineering and Information Technology, Banja Luka, May
2015 ; [editor in chef Vid Jovišević]. - Banja Luka : University of Banja
Luka, Faculty of Mechanical Engineering =Univerzitet u Banjoj Luci,
Mašinski fakultet, 2015 (Laktaši : Grafomark). - 1 elektronski optički disk
(CD-ROM) : tekst, slika ; 12 cm

CD ROM čitač. - Nasl. sa nasl. ekrana. - Bibliografija uz svaki rad.

ISBN 978-99938-39-53-8

COBISS.RS-ID 5049624

**12TH INTERNATIONAL CONFERENCE ON ACCOMPLISHMENTS
IN ELECTRICAL AND MECHANICAL ENGINEERING AND
INFORMATION TECHNOLOGY**

Supported by:

MINISTRY OF SCIENCE AND TECHNOLOGY OF
THE REPUBLIC OF SRPSKA

Organizer and publisher:

FACULTY OF MECHANICAL ENGINEERING
UNIVERSITY OF BANJA LUKA

Co-organizer:

FACULTY OF ELECTRICAL ENGINEERING
UNIVERSITY OF BANJA LUKA

For publisher:

Prof. Darko Knežević, PhD

Editor in chief:

Prof. Vid Jovišević, PhD

Executive editor:

Biljana Prochaska, MSc

Editorial assistant:

Milivoj Stipanović

PROGRAM AND SCIENTIFIC COMMITTEE

Chairman:

Prof. Ostoja Miletić, PhD, Faculty of Mechanical Engineering Banja Luka, BiH.

Members:

Prof. Duško Lukač, PhD, University of Applied Science, Köln, /Germany/
Prof. Simo Jokanović, PhD, Faculty of Mechanical Engineering Banja Luka
Prof. Miloš Kojić, PhD, Harvard University, /USA/
Prof. Milorad Božić, PhD, Faculty of Electrical Engineering Banja Luka
Prof. Petar Marić, PhD, Faculty of Electrical Engineering Banja Luka
Prof. Bobrek Miroslav, PhD, Faculty of Mechanical Engineering Banja Luka
Prof. Ćosić Ilija, PhD, University of Novi Sad, /RS/
Prof. Hadžistević Miodrag, PhD, University of Novi Sad, /RS/
Prof. Soković Mirko, PhD, University of Ljubljana, /SL/
Prof. Milenko Stegić, PhD, University of Zagreb, /RH/
Prof. Ivan Filipović, PhD, University of Wien, /Austria/
Prof. Dušan Gruden, PhD, TU
Prof. Branko Blanuša, PhD, Faculty of Electrical Engineering Banja Luka
Prof. Čedomir Zeljković, PhD, Faculty of Electrical Engineering Banja Luka
Prof. Radivoje Pešić, PhD, University of Kragujevac, /RS/
Prof. Stevan Veinović, PhD, University of Kragujevac, /RS/
Prof. Solvang Björn, PhD, Narvik University, /Norway/
Prof. Ljubiša Papić, PhD, University of Kragujevac, /RS/
Prof. Petar Gvero, PhD, Faculty of Mechanical Engineering Banja Luka
Prof. Milan Radovanović, PhD, Society of Thermal Engineers, /RS/
Prof. Vladimir Savić, PhD, University of Novi Sad, /RS/
Prof. Zdravko Milovanović, PhD, Faculty of Mechanical Engineering Banja Luka
Prof. Janez Kopač, PhD, University of Ljubljana, /SL/
Prof. Milan Zeljković, PhD, University of Novi Sad, /RS/
Prof. Velimir Todić, PhD, University of Novi Sad, /RS/
Prof. Milentije Stefanović, PhD, University of Kragujevac, /RS/
Prof. Snežana Petković, PhD, Faculty of Mechanical Engineering Banja Luka
Assist. Prof. Strain Posavljak, PhD, Faculty of Mechanical Engineering Banja Luka
Prof. Miodrag Manić, PhD, University of Niš, /RS/
Prof. Emilia Assenova, PhD, Technical University of Sofia, /Bulgaria/
Prof. Bogdan Nedić, PhD, University of Kragujevac, /RS/
Prof. Marius Benea Calin, PhD, Faculty of Engineering Hunedoara, /Romania/
Prof. Konstantinos-Dionysios Bouzakis, PhD, AU Thessaloniki, /Greece/
Prof. Dragan Milutinović, PhD, University of Belgrade, /RS/
Prof. Vid Jovišević, PhD, Faculty of Mechanical Engineering Banja Luka
Prof. Ranko Zrilić, PhD, Faculty of Mechanical Engineering Banja Luka

Prof. Viktor Sajn, PhD, University of Ljubljana, /RS/
Prof. Darko Knežević, PhD, Faculty of Mechanical Engineering Banja Luka
Prof. Branislav Anđelković, PhD, University of Niš, /RS/
Prof. Mihajlo Stojčić, PhD, Faculty of Mechanical Engineering Banja Luka
Prof. Bojan Babić, PhD, University of Belgrade, /RS/
Prof. Milomir Gašić, PhD, Faculty of Mechanical and Civil Engineering,
Kraljevo, /RS/
Prof. Vidosav Majstorović, PhD, University of Belgrade, /RS/
Prof. Milorad Milovančević, PhD, University of Belgrade, /RS/
Prof. Ljubodrag Tanović, PhD, University of Belgrade, /RS/
Prof. Miroslav Trajanović, PhD, University of Niš, /RS/
Prof. Miodrag Bulatović, PhD, University of Podgorica, /CG/
Prof. Pavel Kovač, PhD, University of Novi Sad, /RS/
Dobrivoje Ninković, PhD, ABB Turbo-Systems AG, /Switzerland/
Prof. Zisis Samaras, PhD, AU Thessaloniki, /Greece/
Assist. Prof. Halil ÇALISKAN, PhD, Bartın University, Faculty of Engineering,
TURKEY/
Prof. Dragoslava Stojiljković, PhD, University of Belgrade, /RS/
Prof. Olga Kordaš, PhD, KTH Stocholm, /Sweden/
Prof. Neven Duić, PhD, University of Zagreb, /Croatia/
Prof. Aurilla Aurelie Arntzen Bechina, PhD, /Norway/
Prof. Borut Kosec, PhD, University of Ljubljana, /SL/
Prof. Igor Budak, PhD, FTN, Novi Sad, /SR/

WALL TEMPERATURE VARIATION	397
Ratka Neshkovska	
ELECTROCHROMIC COPPER(I) OXIDE THIN FILM AS A CANDIDATE FOR SMART WINDOW	403
Milorad Bojic, Jasna Radulovic, Vesna Rankovic, Danijela Nikolić, Ljubisa Bojic, Jasmina Skerlic	
FLEXIBLE THIN-FILM SOLAR PHOTOVOLTAICS: RESEARCH AND APPLICATION	409
Vujadin Aleksić, Dejan Momčilović, Bojana Aleksić, Ljubica Milović, Aleksandar Sedmak	
ANALYSIS OF THE STEAM LINE DAMAGES	415
Danijela Nikolić, Milorad Bojic, Jasna Radulovic, Jasmina Skerlic, Saša Jovanović	
ENERGY OPTIMIZATION OF SERBIAN BUILDINGS WITH PV PANELS AND DISTRICT HEATING SYSTEM	421
Sevde Stavreva, Cvete Dimitrieska, Igor Andreevski, Sanja P. Vasilevska, Elizabeta Hristovska	
IMPROVING ENERGY EFFICIENCY OF DATA CENTRES	427
Mila Mihajilović, Vanja Šušteršič, Gordana Bogdanović	
LEED TECHNOLOGY IN URBAN PLANNING	433

MECHANICS AND DESIGN

Filip Zdraveski, Dimitri Kozinakov	
ANALYSIS OF POINT SUPPORTED-GLASS WALL SYSTEM UNDER WIND LOAD	441
Filip Zdraveski, Hristijan Mickoski	
APPLICATION OF SIMILITUDE LAWS FOR EXPERIMENTAL INVESTIGATIONS OF DYNAMIC PROPERTIES OF TALL PROTOTYPE STEEL STRUCTURE	451
Filip Zdraveski, Elisaveta Donceva	
MATHEMATICAL MODEL OF DYNAMIC VIBRATION ABSORBERRESPONSE PREDICTION AND REDUCTION	459
Đorđe Miltenović, Milan Tica, Aleksandar Miltenović, Milan Banić	
LOAD CAPACITY OF WORM GEARS WITH COMPACT DESIGN	469
Luka Panić, Atif Hodžić, Ekrem Nezirević	
MODERN AND SOPHISTICATED PROCESSES OF 3D VENEER PLYWOOD BENDING	475
Stevan Maksimović, Mirjana Đurić, Mirko Maksimović, Ivana Vasović	
FATIGUE LIFE ESTIMATION OF AIRCRAFT STRUCTURAL COMPONENTS WITH SURFACE CRACKS UNDER LOAD SPECTRUM	481
Darko Knežević, Saša Laloš, Mitar Jocanović, Velibor Karanović	
EFFECT OF BULK MODULUS OF FLUID ON THE DYNAMIC BEHAVIOR OF THE HYDRAULIC SYSTEM	487



ANALYSIS OF THE STEAM LINE DAMAGES

**Vujadin Aleksić¹, Dejan Momčilović², Bojana Aleksić³, Ljubica Milović⁴,
Aleksandar Sedmak⁵**

Summary: *The methodological approach to the analysis of damage to determine the cause of failure and to repair the damage has been shown using the example of leakage and damage of a steam line for live-steam in thermal power plants and heating plants. The access presented may be applied to similar structures, and its application in preventive maintenance contributes to extension of the exploitation life of the steam lines.*

Key words: steam line, damage, damage analysis, repair

1. INTRODUCTION

Due to the extremely strict demands related to the achievement of the designed capacity and reliability in operation, design and calculation of vital parts of the steam lines is a complex task and is subject to the Regulations on the technical requirements for the design, construction and assessment of harmonization of pressure equipment. During the exploitation, inspections of the steam lines according to the Regulations on the examination of pressure equipment during exploitation life are planned. Leakage of the steam lines induced by material creep due to a large number of hours in exploitation exceeding the prescribed number of hours is expected consequence. The continuous exploitation without the regular and emergency inspection prescribed by the Regulations may lead to frequent failures of the steam-line systems and unnecessary costly repairs.

In addition to direct material damage that they may induce, steam line failures can also affect the safety of personnel by significantly endangering it. Besides, unexpected delays in exploitation induce the damage resulting from the system downtime, which is usually much higher than the direct damage. High place among the causes of the aforementioned failures takes inadequate exploitation and maintenance.

¹ M.Sc. Mining Engineer, IWE, IMS Institute, Belgrade, Serbia, (vujadin.aleksic@institutims.rs)

² Ph.D., IWE, IMS Institute, Belgrade, Serbia, (dejan.momcilovic@institutims.rs)

³ B.Sc. Tech. Engineer, Faculty of Technology and Metallurgy, Belgrade, Serbia, (b_aleksic@hotmail.com)

⁴ Ph.D., Assistant Professor, Faculty of Technology and Metallurgy, Belgrade, Serbia, (acibulj@tmf.bg.ac.rs)

⁵ Ph.D., Professor, Faculty of Mechanical Engineering, Belgrade, Serbia, (asedmak@mas.bg.ac.rs)

2. DETECTION OF DAMAGE

The structure of the steam line is exposed to the low-cycle fatigue loads. Such a load caused fatigue fracture and leakage of the steam line for live steam at RA 10, TPP Kolubara A, Tab. 1, which was determined by visual examination, Fig. 1.

Table 1 *Technical Data on the Steam Line with Detected Damage*

Stated pipe material:	15128.5	ČSN – Standard [1]
Steam line in exploitation:	160000 of operating hours	
Operating pressure:	75 , bar	
Operating temperature:	540 , °C	

The parts of the steam line in front of and behind the damaged part were tested using the NDT methods, Fig.1. The results showed that there were no damages on tested parts of the steam line.

In the microstructures of tested replicas taken from the surface of the material of the damaged pipe a certain degree of quality degradation was observed, induced by the initial spheroidization and precipitation of carbides at the grain boundaries, with presence of scattered globular perlite - level of qualitative degradation of the microstructure B/C. [2].

The assessment of microstructure of the material of pipe elbows and welded joints and the level of creep damage on undamaged part of the steam line was made according to the recommendations for the assessment of microstructure [3].

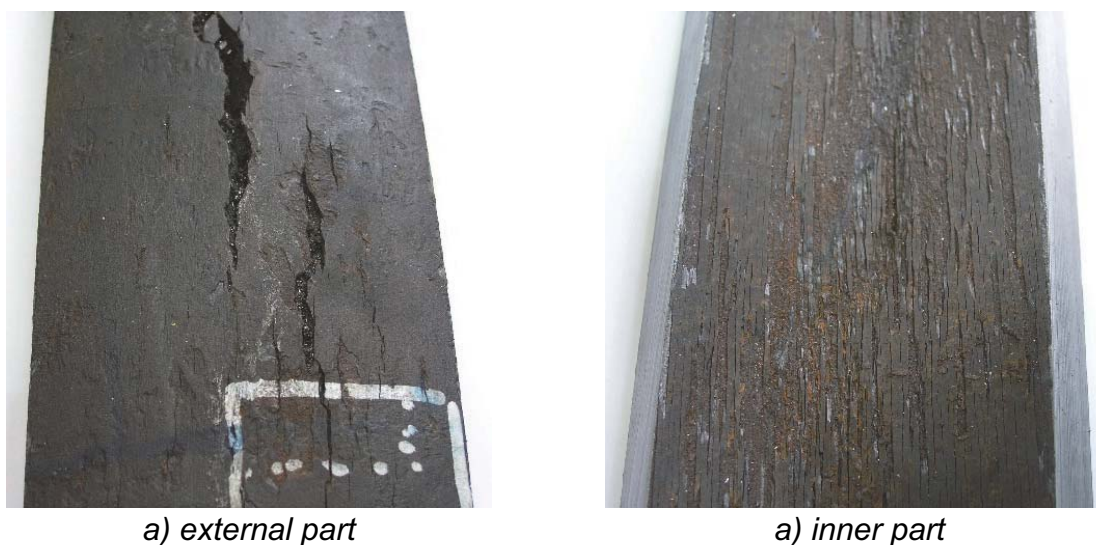


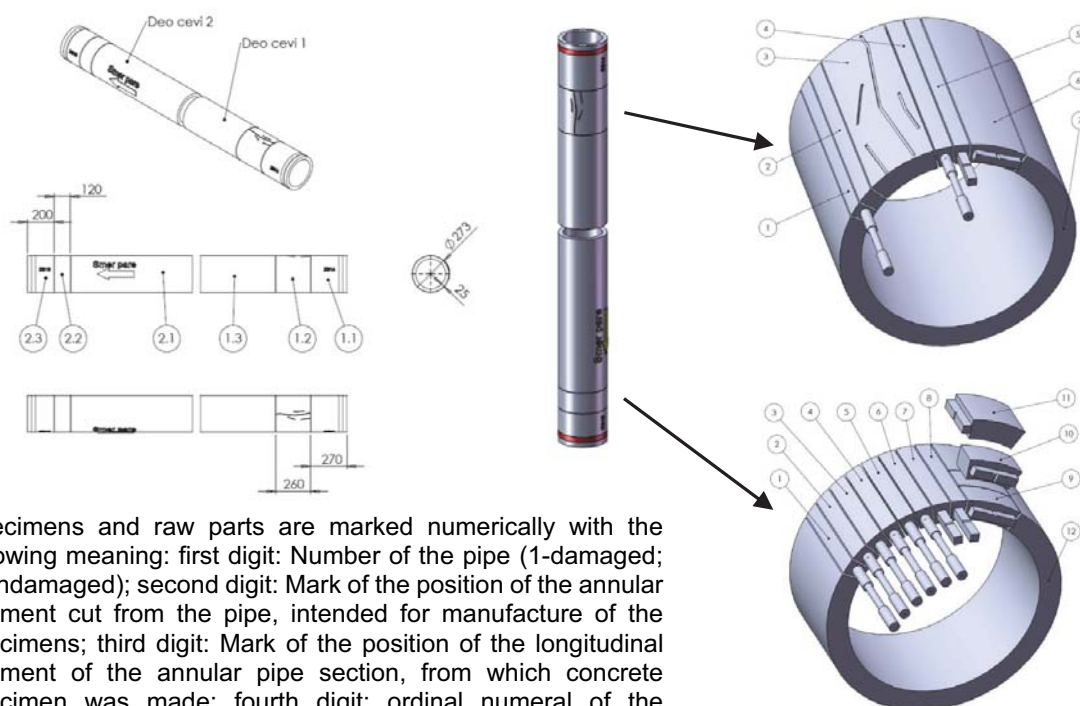
Fig. 1 *The Appearance of the Damaged Part of the Steam Line*

3. DAMAGE ANALYSIS

In order to analyze the damage and determine the cause of leakage of the steam line for live steam, line RA 10, TPP Kolubara A, two parts of the pipe $\varnothing 273 \times 25$ mm, sampled from the same pipe of the leaking steam line, were submitted for examination. Namely, the pipe part with damage 1080 mm-long (1) and the pipe part without damage approx. 1260 mm-long (2), Fig. 2, were submitted.

From the pipe samples submitted the specimens and raw parts were made for testing, sampled from the positions defined in Fig. 2.

Testing of the chemical composition, structure of the materials of both damaged and undamaged pipes and mechanical properties as well was conducted.



Specimens and raw parts are marked numerically with the following meaning: first digit: Number of the pipe (1-damaged; 2-undamaged); second digit: Mark of the position of the annular segment cut from the pipe, intended for manufacture of the specimens; third digit: Mark of the position of the longitudinal segment of the annular pipe section, from which concrete specimen was made; fourth digit: ordinal numeral of the specimen from the same section.

Fig. 2 Positions of Annular Segments and Test Specimens

4. CHEMICAL COMPOSITION AND MICROSTRUCTURE TESTS

Tab. 2 gives the standard chemical composition of the stated pipe material for the steam lines [1, 4].

Table 2 Chemical Composition of the Material, 15 128.5 (ČSN), 14MoV6-3 (DIN)

Chemical Composition, %											
C	Mn	Si	Cr	Mo	V	P	S	Al	Ni	Ti	W
0.10	0.45	0.15	0.50	0.40	0.22	max	max	max	/	/	/
0.18	0.70	0.40	0.75	0.60	0.35	0.040	0.040	0.025	/	/	/

The raw part sampled from the damaged part of the pipe was subjected to the analysis of chemical composition using quantitative spectrophotometric method, and the results of the analysis are given in Tab. 3.

Table 3 The Results of Chemical Analysis of the Material (Pos. 1.2.6)

Chemical Composition, %											
C	Mn	Si	Cr	Mo	V	P	S	Al	Ni	Ti	W
0.234	0.665	0.253	0.155	0.125	0.004	0.012	0.009	0.026	0.121	0.004	0.063

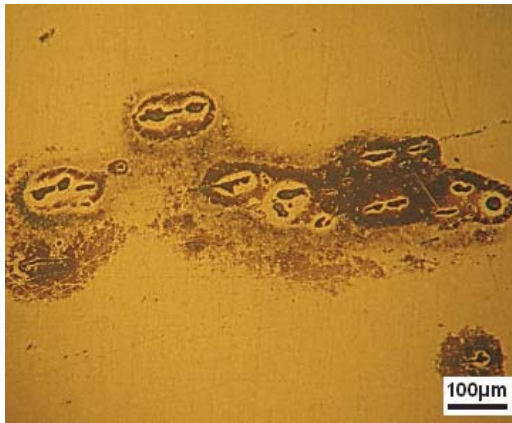
Analysis of the chemical composition by gravimetric and volumetric methods was conducted on the raw part sampled from the undamaged part of the pipe, and the results of the analysis are given in Tab. 4.

To test the microstructure and micro hardness, the raw parts were made with melt-on transversal and longitudinal section, sampled from the positions 1.2.3 and 1.2.6 of the damaged pipe, as well as the raw part from the position 2.2.9 of the part of the pipe without damage.

Characteristic micro photographs of the microstructure are shown in Fig. 3, and the measured values of the microhardness are given in Tab. 5.

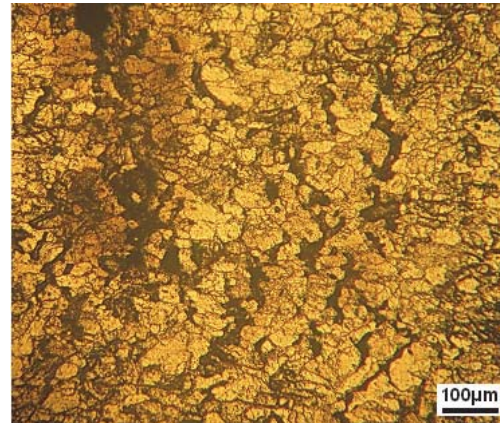
Table 4 *The Results of Chemical Analysis of the Materials (Pos. 2.2.8).*

Chemical Composition, %											
C	Mn	Si	Cr	Mo	V	P	S	Al	Ni	Ti	W
0.20	0.72	0.29	/	/	/	0.010	0.022	/	/	/	/



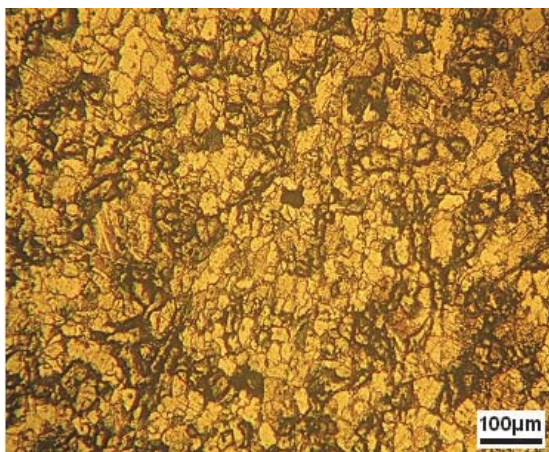
a)

Sample 1.2.3 (without etching), longitudinal section, coarse non-metallic inclusions of A3, B1 i D2 type.



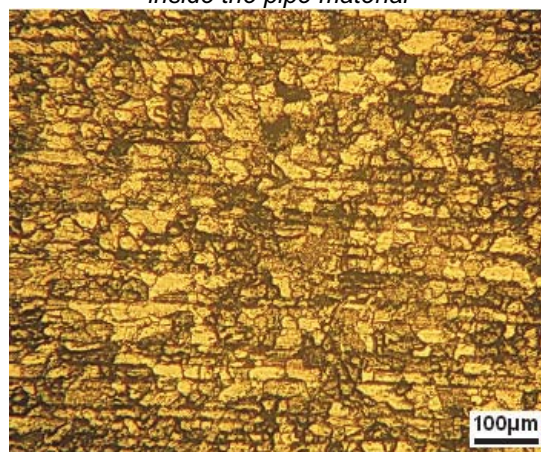
b)

Sample 1.2.3 (3% nital etched), transversal section, propagation of one of the macro cracks inside the pipe material



c)

Pipe sample 1.2.6 (3% nital etched), transversal section, predominantly ferritic microstructure in the pipe cross section



d)

Pipe sample 2.2.9 (3% nital etched), longitudinal section, predominantly ferritic, finely stripped microstructure in longitudinal section of the pipe.

Fig. 3 *Characteristic Micro Photographs of Tested Microstructure*

Table 5 The Results of Testing of Vickers Hardness (HV1) by Applying Small Force

Designation of the Raw Part	Transversal Section		Longitudinal Section	
	Measured	Mean Value	Measured	Mean Value
1.2.3	133-133-133-138-131	133.6	121-121-121-131-123	123.4
1.2.6	115-121-110-106-108	112.0	112-112-110-110-110	110.8
2.2.9	108-117-108-110-115	111.6	127-119-129-131-119	125.0

5. MECHANICAL TESTING

5.1 Tensile tests

The results of testing of the specimens at room temperature, +20°C, are shown in Tab. 6, and that at elevated temperature, +540°C, in Tab. 7.

Table 6 The Results of Tensile Tests at Room Temperature, +20 °C

Specimen	Mean Value			
	R _e , MPa	R _m , MPa	A _{5.65} , %	Z, %
1.2.1.1, 1.2.1.2, 1.2.4.1	218.3	347.0	32.42	68.35
2.2.1.1, 2.2.3.1, 2.2.5.1	231.3	360.3	34.00	71.55

Table 7 The Results of Tensile Tests at Elevated Temperature, +540 °C

Specimen	Mean Value			
	R _e , MPa	R _m , MPa	A _{5.65} , %	Z, %
1.2.2.1, 1.2.2.2, 1.2.4.2	127.7	148.7	/	/
2.2.2.1, 2.2.4.1, 2.2.6.1	116.7	139.0	/	/

5.2 Impact energy tests

The results of impact energy tests at room temperature, +20 °C, conducted with the specimens of both damaged and undamaged parts of the pipe, are shown in Tab. 8.

Table 8 The Results of the Impact Energy Tests of the Damaged Part of the Pipe

Specimen	Orientation	Mean Value, KV _{2/300} , J
1.2.5.1, 1.2.5.2, 1.2.5.3	Longitudinal ^a	50.68
1.2.6.1, 1.2.6.2, 1.2.6.3	Transversal ^b	30.08
2.2.7.1, 2.2.7.2, 2.2.8.3	Longitudinal ^a	51.01
2.2.9.1, 2.2.9.2, 2.2.9.3	Transversal ^b	42.51
2.2.11.1, 2.2.11.2, 2.2.11.3	Longitudinal ^c	63.11
2.2.10.1, 2.2.10.2, 2.2.10.3	Transversal ^c	58.21

^{a)} notch in radial direction; ^{b)} notch in axial direction; ^{c)} notch in the direction of the material thickness.

5.3 Hardness tests

The results of the hardness tests conducted with both damaged and undamaged parts of the pipe are shown in Tab. 9.

Table 9 The Results of the Measurement of Hardness

Raw Part	Hardness, HBW 5/7500/20"	Mean Value, HBW
1.2.6	117 - 114 - 117	116
2.2.9	114 - 111 - 110	112

6. CONCLUSION

Chemical composition and mechanical properties of pipe material for the steam line do not correspond to the stated pipe material of 15128.5 grade according to ČSN standard [1], which suggests that the background and quality of the pipe built-into the steam line are unknown, and therefore inadmissible.

Also, the chemical composition of the material does not correspond completely to any steel grade for seamless pipes of non-alloy and alloy steels with properties specified for elevated temperature as defined by standard EN 10216-2 [5].

The chemical composition of the material approximates to the steel grade designated as P265GH, while mechanical properties approximate to the steel grades designated as P195 GH and P235GH, which can be interpreted as a result of the conditions of exploitation, i.e. continuous operation without regular and emergency inspection.

The cause of leakage is the inhomogeneity of the material and a greater number of hours in operation than prescribed, and the result is creep of the base metal, leakage and failure of the steam line.

In order to prevent such phenomena, it is necessary to have a system of preventive maintenance and keep accurate records of all actions on the steam line, as well as to keep records on the quality of the materials built-in at the beginning and during exploitation of the steam line, respecting the terms of regular and emergency inspection prescribed by the Regulations.

It is necessary to estimate the exploitation life of the steam line on the undamaged part of the steam line, based on reliably established quality of the materials built-into steam line, the methods of non-destructive testing (NDT), including endoscopy, in correlation with the technique of risk-based inspection (RBI) [4, 6].

REFERENCES

- [1] ČSN 41 5128:1984. *Ocel 15 128, Cr-Mo-V*. Český normalizační Institut. Praha.
- [2] ECCRC Recommendations - Volume 6. (2005). S. Concari, *Residual life assessment and microstructure, Issue 1*, Piacenza, Italy, p.36.
- [3] VGB - TW 507 e. (1992). *Guideline for the Assessment of Microstructure and Damage Development of Creep Exposed Materials for Pipes and Boiler Components*, Edition 1992.
- [4] Janovec J., Polachova D., Junek M. (2012). Lifetime Assessment of a Steam Pipeline. *Acta Polytechnica*, Vol. 52, No. 4/2012, p. 74-79.
- [5] SRPS EN 10216-2:2007. *Bešavne čelične cevi za opremu pod pritiskom, Tehnički zahtevi za isporuku. Deo 2: Cevi od nelegiranog i legiranog čelika sa osobinama utvrđenim za povišenu temperaturu*. Institut za standardizaciju Srbije. Beograd.
- [6] Aleksić V., Bulatović S., Aleksić B., Milović Lj. (2014). NDT and RBI in Function of Pressure Equipment Integrity Loss. *Zbornik radova Građevinskog fakulteta, Međunarodna konferencija "Savremena dostignuća u građevinarstvu"*, Subotica, Srbija, 2014, p. 61-66.

Acknowledgements

This work is a contribution to the Ministry of Education and Science of the Republic of Serbia funded Project TR 35011.



530577-TEMPUS-1-2012-1-RS-
TEMPUS-JPCR

**Improvement of Product
Development Studies in Serbia
and Bosnia and Herzegovina**